

CAMERA - RTE 70/800

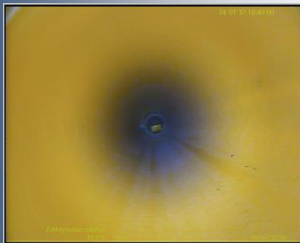
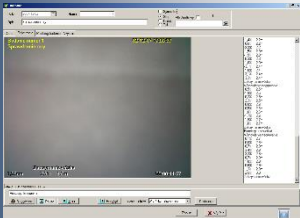
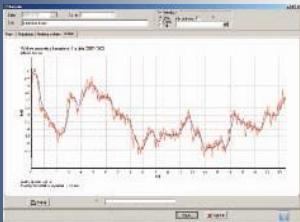
Set for inspection of pipes and channels



The RTE 70/800 portable video inspection system is intended for inspection condition of patency of pipes and channels using a high resolution camera. It allows quick detection and recording of obstacles, congestion, cracks and other damages caused in water supply and sewage pipes, etc. The system enables placing on the monitor an image, descriptions allowing quick identification of the examined area together with a record of the distance (meters) traveled through the probe and slope of the tested section of the channel in the form of a slope chart (available in a set with a trolley). The camera has an automatic leveling system in both axes and a system called UPC (camera can take a horizontal position relative to the ground regardless of tipping the trolley). The archiving of inspections is carried out on a computer mounted in a box (control panel), and the processing of the recorded image takes place via a special computer program. The image from the works on the channel can be recorded on a Pendrive disc, the movie can be accompanied by a printout of inheritance and a report on the appearance of the channel.

The RTE 70/800 kit for pipe and duct inspection is a modular set. Its basic element is a box with a built-in computer set with software, a 17" LCD monitor, and electronic circuits enabling the display of typed keyboard texts, the size of the traveled path through the probe and the inclination of the tested sections of pipes and channels. From the desktop placed in the box we control the camera's eye lighting and the movement of the self-moving trolley. The remaining elements (modules) are chosen by the Ordering Party depending on the needs.

The kit can be retrofitted with additional modules at any time. All components of the RTE 70/800 Kit are compatible with each other.



Console	Simple to use, easy to transport anywhere, friendly to the operator
Display	17" LCD monitor (color)
Video standard	PAL (color)
Video recorder	HDD
Moving the record	Pendrive
Max. recording time	up to approx. 50 hours HDD
Entering entries	keyboard
Lighting	adjustable potentiometer
Software	author's program for processing a saved image
Print	through a connected printer to the USB port
Speed and direction control	adjustable potentiometer
Chart - level of declines	displayed on the screen and as a printout

Software license with reporting module	A program for processing a saved image and a module for preparing reports on the work performed
Video recording format	AVI
Image compression	divx
Resolution of the saved image	720x57
Customer data and individual work	saved in catalogs
Chart - level of declines	real and averaged
The course of the study	column all events assigned to the location where the cart was located
A printout of the dip level chart and the test run	via a connected external printer to the USB port

Self-propelled trolley 100-400 mm with a rotating eye	Waterproof, self-propelled trolley made of hard elements, nickel-plated, bolted with screws made of stainless materials
Truck drive	electric
Transmission	2 rigid axles / 4x4
Trolley 100-400 - recording range	pipes with a diameter of 100 to 400 mm
Trolley 150-800 - recording range	pipes with a diameter of 150 to 800 mm
Switching the direction of travel	manually
Speed regulation	manually
Automatic camera leveling	yes, with one button
Speed of the trolley	from 0 to 16 cm / sec
Camera mounted	on a self-moving trolley
Camera sensitivity	1.0 lux.
Number of illuminating diodes	4 pcs integrated
Controlling the object's iris	automatically
White level balance	automatically
Strengthening the signal	automatically

Drum with transmission cable	Rotating drum with reinforced transmission cable transmitting the signal from the camera to the control panel
Cable length counter	electric
The length of the cable	120 m
Coiling the cable	manually