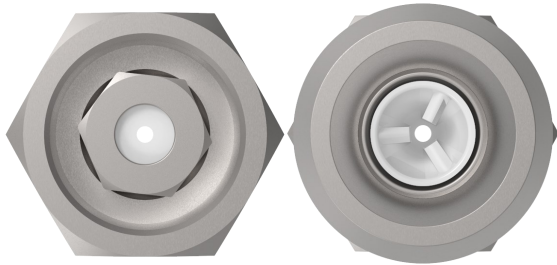
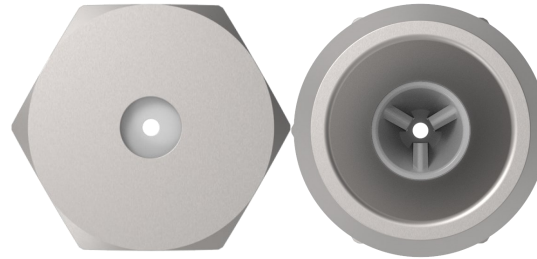


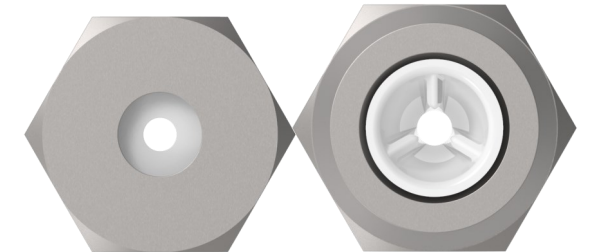
# Round jet inserts



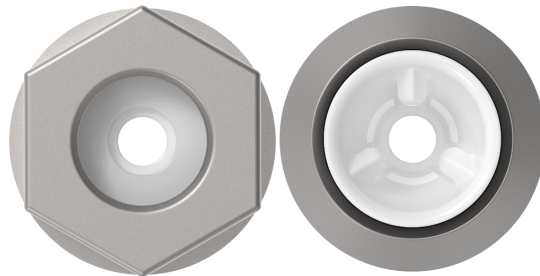
22.025 |  $\varnothing$  0,3 - 0,9 mm



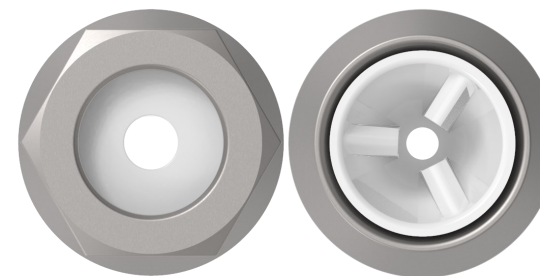
22.025 |  $\varnothing$  1,0 - 3,2 mm



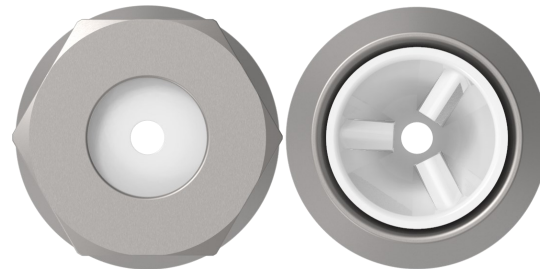
22.025 |  $\varnothing$  3,4 - 4,0 mm



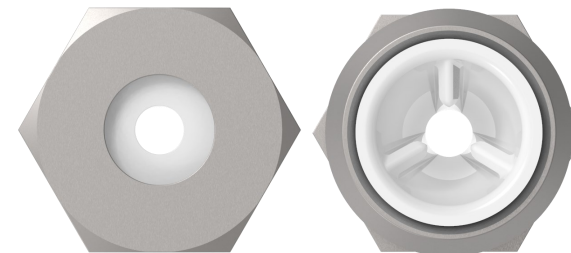
22.04 |  $\varnothing$  0,3 - 1,5 mm



22.06 |  $\varnothing$  0,3 - 3,0 mm



22.08 |  $\varnothing$  0,3 - 3,4 mm



22.10 |  $\varnothing$  1,0 - 4,0 mm